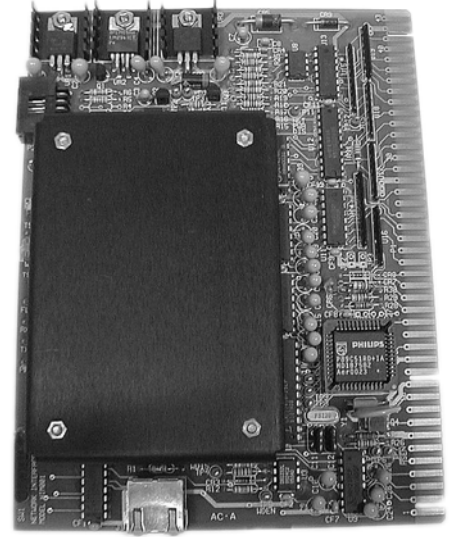

NETWORK INTERFACE MODULE

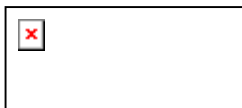
DATA FLOW SYSTEMS IS PROUD TO INTRODUCE A REVOLUTIONARY APPROACH TO THE SCADA SERVER – A SELF-CONTAINED, MODULARIZED, SCADA SERVER PACKAGED IN A PROTECTIVE WALL-MOUNTED ENCLOSURE.

The Network Interface Module (NIM) is a DOS-based module designed as a generic, network-interface platform for use with TAC II telemetry systems. The NIM functions as an interface between a 10base-T Ethernet network and up to fifteen function modules of any combination. By communicating via a network instead of through traditional radios, the NIM is able to pass data quickly and reliably. DFS' HT3 server can complete a system-polling loop in less than 5 seconds while communicating – simultaneously – with up to 100 NIM-based RTUs. The NIM plugs into the Radio Interface Module (RIM) slot of a Remote Terminal Unit (RTU) and provides the normal RIM functions of power supply, monitor, and control. The NIM can also be used with a RIM, a Computer Interface Module (CIM), or other NIMs. The NIM is capable of using serial tunneling – a process by which serial communications over a network is achieved – to communicate with RS232 devices, including Modbus devices.



FEATURES AT A GLANCE

- DOS-based network CPU
- 250 addresses per communications link
- Uses standard TCP/IP for communication
- May be polled by multiple HT3 servers
- System polling time of 2-5 seconds
- Plug-and-play network configuration
- Serial tunneling to RS-232 devices
- LEDs on power, transmit data, network link, CPU failure, and test
- Two (2) configurable RS-232 ports
- RS-232 Service Port for system debugging
- Test mode switch for system debugging
- Battery back up during power failure
- Flash memory for field upgrades
- Program updates available from HT3 server
- No on-board adjustments, switches or straps (self configuring)
- Card retainer interlock that is bypassable and shareable



SPECIFICATIONS

Model	NIM001
Board Size	5.25" X 6.88"
Service Port	RS-232 (ASCII)
Circuit Protection	Transorb
Supply Voltage	12-14 VDC
Supply Current	579 mA
Network Interface	10Base-T
Network Protocol	TCP/IP (UDP Datagram)
Serial Interfaces	Two (2) external serial interfaces with four (4) modes of operation. Interfaces are configurable at the connector.

TYPICAL APPLICATIONS

Serial Tunneling Device – The NIM uses serial tunneling, a process by which serial communications over a network is achieved, to communicate with RS-232 devices, including Modbus devices.

WARRANTY

This product carries a one (1) year return-to-factory warranty against defects in material and workmanship. When installed with factory recommended surge protection, the return-to-factory warranty is extended to three (3) years and is also covered against damage due to lightning and surge. DFS will repair or replace at its option, F.O.B. Melbourne, Florida, any part or parts of this product during the warranty period. A Return Authorization (RA) must be obtained by contacting the DFS Factory Repair Center at 321-259-5009 or by email at rma@dataflowsys.com.

