
HYPER SCADA SERVER (HSS002-2)

DATA FLOW SYSTEMS IS PROUD TO INTRODUCE A REVOLUTIONARY APPROACH TO THE SCADA SERVER – A SELF-CONTAINED, MODULARIZED, SCADA SERVER PACKAGED IN A PROTECTIVE WALL-MOUNTED ENCLOSURE.

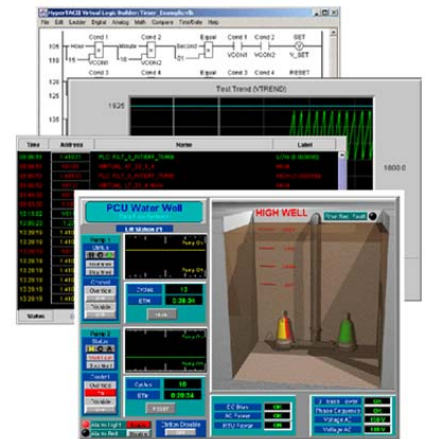
The HSS002-2 is the top-of-the-line model of a line of state-of-the-art network-based SCADA system servers offered by Data Flow Systems.

The HSS002-2 includes dual Hyper Server Modules that provide Hot-Standby Redundancy and feature automatic switch-over without human involvement. The secondary server mirrors the entire database every 10 minutes. A back-up of entire database is stored to a primary workstation computer daily.

Supporting up to seven independent radio frequencies, up to 3,584 Remote Terminal Units (RTUs), and several communication protocols, our SCADA servers are ready to operate a SCADA system right out of the box. Every Hyper SCADA Server is delivered with the capacity to support 645,120 physical "hard-wired" I/O points, plus an unlimited number of "virtual" points.

The self-contained design of our SCADA system servers isolates the critical remote equipment polling, data collection, storage, and information serving functions from the operator interface using Client-Server Architecture. Data is readily available to operators, supervisors, and managers throughout the utility enabling them to make fast and effective decisions.

The Hyper SCADA Server offers the power and speed of networking, stability and reliability that you expect in a server and the versatility to expand without costly license upgrades. All SCADA Software upgrades are provided free of charge for the life of the system.



FEATURES AT A GLANCE

- Integrated Hardware & Software Solution
- HT3 SCADA Software Program
- HT3 Mobile (optional)
- Unlimited I/O Point-Count License
- Unlimited Development / Client Licenses
- Connects to MS Windows-Based PC(s)
- Browser-Based HMI (MS Internet Explorer)
- Linux OS (transparent to user)
- MySQL Realtime & Historical Database
- Automated RTU I/O Screen Generator
- Custom Screen Builder Program & Tools
- Ladder Logic Program Builder
- Multiple Modbus Protocols Supported
- Allen Bradley Protocol Driver
- Ethernet, TCP/IP, PPP Interfaces
- Nine (9) Pre-Configured Data Reports
- Integrated 911 & 411 Modems/Software
- Integrated UPS / Back-up Battery
- Compact Flash Configuration Backup
- Redundant "Hot-Standby" Included
- Interactive Help & User Guide
- Lifetime SCADA Software Warranty
- Free SCADA Software Updates

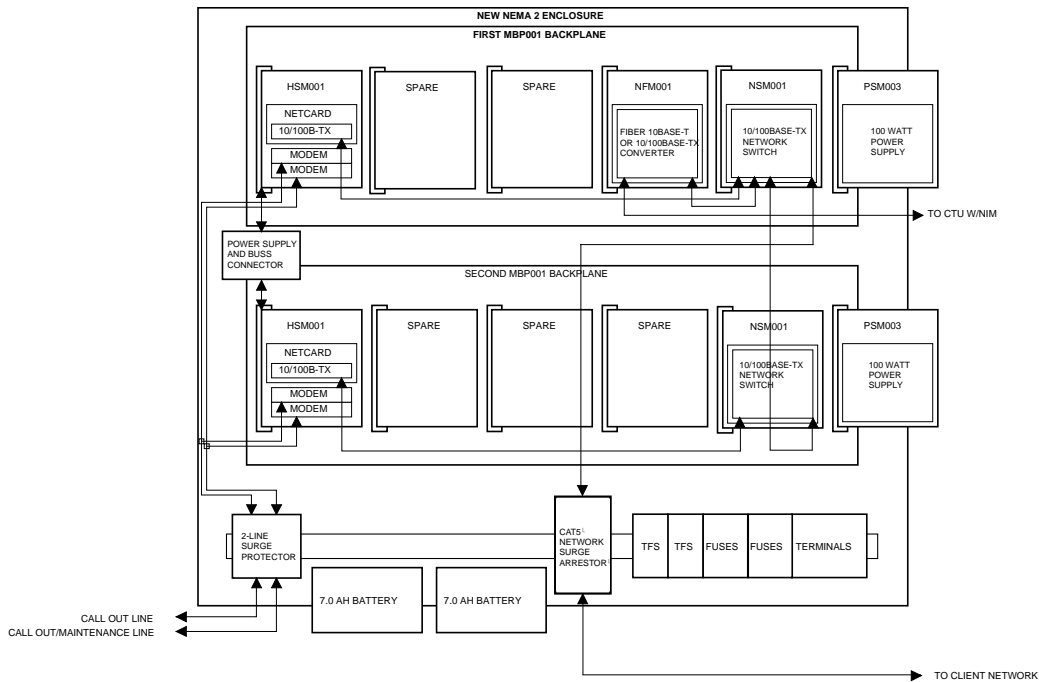


DATA FLOW SYSTEMS, INC. 605 N. JOHN RODES BLVD., MELBOURNE, FL 32934
WWW.DATAFLOWSYS.COM PHONE: 321-259-5009 EMAIL: INFO@DATAFLOWSYS.COM

SPECIFICATIONS

Model	HSS002-2
Enclosure Size	24"W x 30"H x 8"D
Supply Voltage	115 VAC - 60 Hz
Environment	41° -86° F (5° - 30° C) Moisture-Free
Network Interface	10/100base-TX
Network Protocol	TCP/IP
Dial-up Connection	PPP
Communication Protocols	DFS TAC II, DFP (DFS' new high-speed protocol), Modbus ASCII, Modbus RTU, Modbus TCP

HARDWARE DIAGRAM



WARRANTY

This product carries a one (1) year return-to-factory warranty against defects in material and workmanship. When installed with factory recommended surge protection, the return-to-factory warranty is extended to three (3) years and is also covered against damage due to lightning and surge. DFS will repair or replace at its option, F.O.B. Melbourne, Florida, any part or parts of this product during the warranty period. A Return Authorization (RA) must be obtained by contacting the DFS Factory Repair Center at 321-259-5009 or by email at rma@dataflowsys.com.