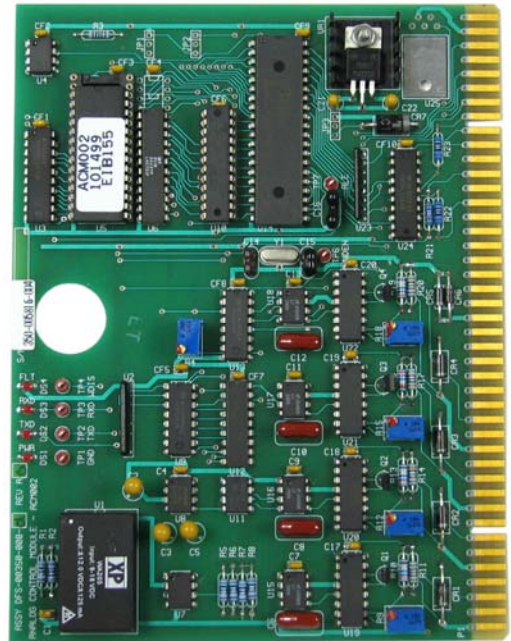

ANALOG CONTROL MODULE

DESIGNED FOR USE WITH THE 200 SERIES RTU FAMILY, DFS RTU MODULES ARE ASSEMBLED FROM THE HIGHEST QUALITY COMPONENTS AND DESIGNED TO MAXIMIZE USABILITY WHILE MINIMIZING INSTALLATION, MAINTENANCE, AND DOWNTIME.

The Analog Control Module (ACM) is a microprocessor-controlled multiple-output module used to control from one (1) to four (4) analog outputs. Each output provides 0-20 mA with 12-bit accuracy. The rate of change (slew rate) of each point is configured over the radio link.

An analog monitor point – at the same RTU or at any other TAC II RTU – can automatically control any of the ACM's outputs. This is configured at the central site computer and is available for an unlimited number of control points.



FEATURES AT A GLANCE

- 4 analog output points
- 12-bit digital-to-analog converter
- 1200 or 9600 baud communication
- On-board communications and functional firmware
- On-board voltage regulation
- LEDs for power, receive data, transmit data, and CPU failure
- Surge protected (nondestructive)
- Removable without disturbing field wiring
- No on-board adjustments, switches or straps (self-configuring)
- Keyed to prevent damage

SPECIFICATIONS

Model	ACM002
Board Size	5.25" x 6.88"
Output	0-20 mA
Maximum Load	1000 Ohm
Power Requirements	10-14 VDC, 200 mA
LEDs	Power, receive data, transmit data, CPU failure

TYPICAL APPLICATIONS

- Pump Speed Control
- Valve Position Control
- Gate Position Control
- Flow Control
- Pressure Control
- Level Control
- Chemical Injection Control
- Remote Set-Point Control

WARRANTY

This product carries a one (1) year return-to-factory warranty against defects in material and workmanship. When installed with factory recommended surge protection, the return-to-factory warranty is extended to three (3) years and is also covered against damage due to lightning and surge. DFS will repair or replace at its option, F.O.B. Melbourne, Florida, any part or parts of this product during the warranty period. A Return Authorization (RA) must be obtained by contacting the DFS Factory Repair Center at 321-259-5009 or by email at rma@dataflowsys.com.