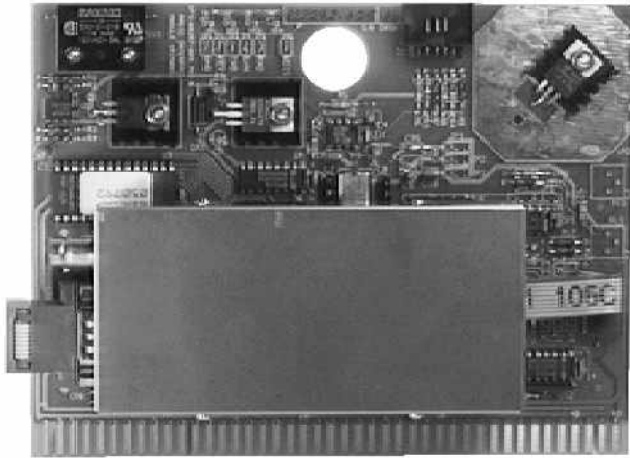


Radio Interface Module



DESCRIPTION:

The Radio Interface Module is a microprocessor-controlled module designed for use with TAC II Telemetry Systems. This module will interface with up to 15 I/O modules of any combination. This module is used in radio telemetry configurations.

SPECIFICATIONS:

Board size	5.25" x 6.88"
Circuit Protection	Transorb
Radio interface	TTL - Manchester Coded
Service port	Pseudo-RS-232 (ASCII)
Supply Voltage	12 to 14 VDC
Supply Power	2.8W average, 17W peak

FEATURES:

- Pseudo-RS-232 service port

- Board mounted transceiver with TTL interface
- 250 radio interface modules per communications link
- On board voltage regulation
- Watchdog Timer
- LEDs on power, transmit data, receive data, and CPU failure
- On board communications and functional firmware
- Surge protected (nondestructive)
- No adjustments, switches or straps (self configuring)
- Keyed to prevent damage
- Gold edge connector fingers
- Module removable without disturbing field wiring
- Power interlocked to prevent removal with power applied
- 1200 baud communication
- UL Listed

-
- Order model RIM005

-
- ## REPRESENTATIVE: