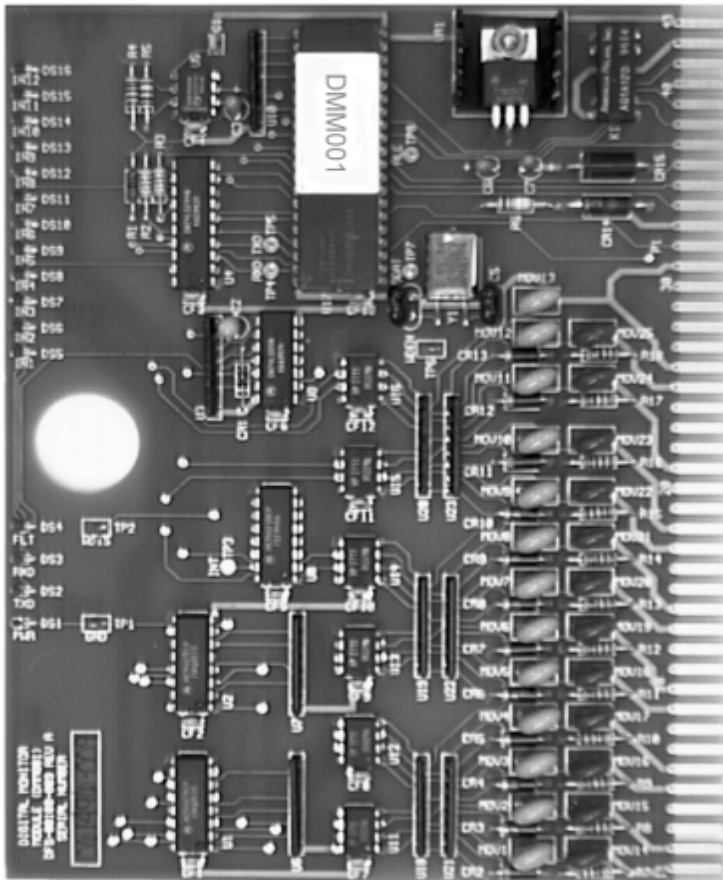


DIGITAL MONITOR MODULE



Features

- ◇ 12 input points
- ◇ Opto-isolated input points
- ◇ LEDs indicate the status of all input points
- ◇ Time-tagged messages
- ◇ On-board voltage regulation
- ◇ Watchdog Timer
- ◇ LEDs on power, transmit data, receive data, and CPU failure
- ◇ On-board communications and functional firmware
- ◇ Surge protected (nondestructive)
- ◇ No adjustments, switches or straps (self-configuring)
- ◇ Keyed to prevent damage
- ◇ Gold edge connector fingers
- ◇ Module removable without disturbing field wiring
- ◇ Power interlocked to prevent removal while powered
- ◇ 1200 baud communication
- ◇ UL Listed

Description

The Digital Monitor Module (DMM001) is a microprocessor-controlled, digital multi-input module. This module is used to monitor from 1 to 12 digital input points. Each input point is optically isolated with transient suppression for protection from voltage spikes. It can directly monitor AC or DC voltages from 10 to 30V. By inserting a resistor in series, an input point can monitor up to 300 V. Each change in status is time-tagged to within 2 seconds of the actual event to maintain accurate event logging.



Data Flow Systems, Inc. * 605 N John Rodes Blvd * Melbourne, FL 32934 * (321)259-5009

DIGITAL MONITOR MODULE (DMM001)

Brief Specifications

The Digital Monitor Module (DMM) shall accept 12 on/off inputs of 12 to 30 volts AC or DC. Voltages from 100 to 300 volts AC or DC shall be accommodated with the use of an inline voltage converter device. Status reporting of these input points shall have an accuracy of +- 2 seconds, the accuracy being defined as time of an occurrence to actual time recorded by the central site computer. The Digital Monitor Module shall not require interfacing relays to monitor 24 VDC, 115 VAC, 220 VAC or 480 VAC. The Digital Monitor Module shall have LEDs to indicate: the status of each input point; receive communications; transmit communications; CPU fault; and power status. The configuration of the monitor points as alarm points or monitor points (pump run time monitors) shall be operator changeable. Connector fingers shall be gold-over-nickel-over-copper plated to inhibit corrosion. The configuration shall not require any software or firmware changes in the system.

Technical Data

Board size	5.25" x 6.88"
Input Voltages	10-30 volts AC/DC, 30-300 volts AC/DC with inline resistors
Input Protection	M.O.V., Transorb, and Opto-isolated
Input Impedance	6K ohm
Supply Voltage	8 to 14 VDC
Supply Current	150 mA

Warranty

Data Flow Systems, Inc. (DFS) offers a one (1) year on-site warranty covering defects in materials and workmanship. All DFS "plug-in" function modules, Pump Control Units (PCU), Supervisory Control Units (SCU), and Back Pack Radios (BPR) carry an extended two (2) year return-to-factory warranty. This extended warranty does not cover misuse, vandalism, or Acts of God. However, these items are warranted against damage due to lightning for the entire three-year period.

Represented by

Order Model DMM001-1

61101

Ph:(321)259-5009 * Fax:(321)259-4006 * <http://www.dataflowsys.com> * sales@dataflowsys.com