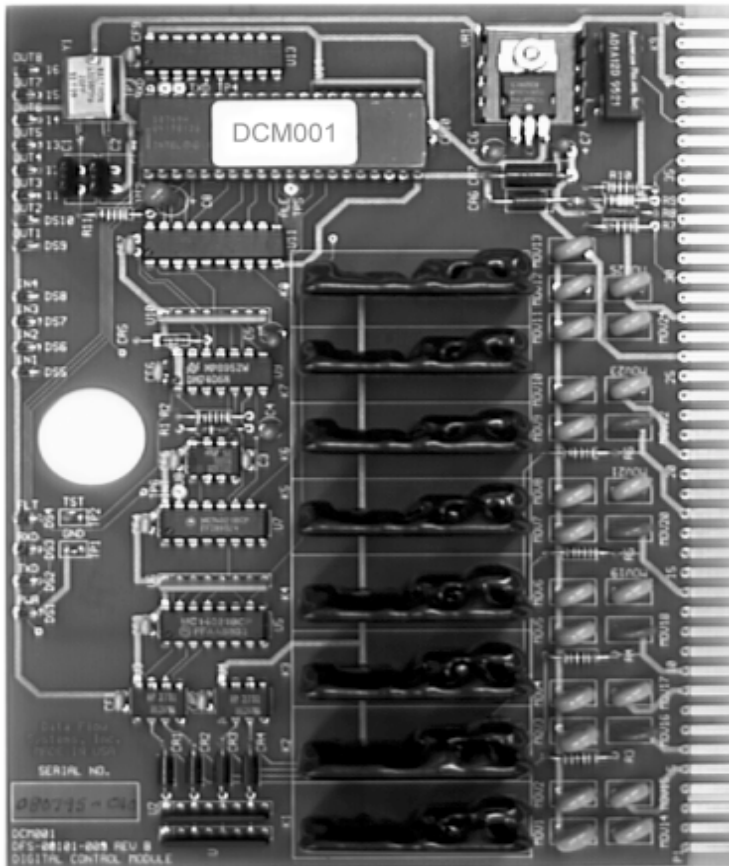


DIGITAL CONTROL MODULE



Features

- ✧ 4 digital input points (one used to enable / disable phase monitor function, three used as phase monitor or general input points)
- ✧ 8 digital output points
- ✧ Solid state relay outputs
- ✧ Pulse durations from .5 to 127 sec.
- ✧ Opto-isolated input / output points
- ✧ Time-tagged messages
- ✧ Surge protected (nondestructive)
- ✧ LEDs indicate input / output status
- ✧ On board communications and functional firmware
- ✧ On board voltage regulation
- ✧ Power interlocked to prevent removal while powered
- ✧ Module is removable without disturbing field wiring
- ✧ No adjustments, switches or straps (self configuring)
- ✧ Watchdog timer
- ✧ Gold edge connector fingers
- ✧ 1200 baud communication
- ✧ UL Listed

Description

The Digital Control Module (DCM001 or DCM011) is a microprocessor-controlled multiple output/input module. The DCM001 module is used to control 8 AC outputs and the DCM011 module is used to control 8 DC outputs. Both provide 4 opto-isolated inputs. Timed duration pulse outputs are supported. Four digital input points may be configured to provide a phase monitor function which will shut down all outputs on failure of any phase. One point is used to enable or disable the phase monitor function. The other three are used as a phase monitor or, if phase monitoring is not required, as general purpose inputs.



Data Flow Systems, Inc. * 605 N John Rodes Blvd * Melbourne, FL 32934 * (321)259-5009

Digital Control Module (DCM001 or DCM011)

Brief Specifications

The Digital Control Module (DCM) shall provide remote control of eight (8) independent 60 to 280 volt AC devices. The control relays shall be solid state devices with zero crossover detection. Each control point shall be capable of driving a .5 amp. load @ 280 volts AC (140 VA), with inrush current of 5 amps. The DCM shall have the configurable capability to automatically shut down all outputs in the case of a power loss on any one of three phases. Operator intervention shall be required to restart a control point after a phase loss shutdown. Any discrete control point shall have the capability of being automatically controlled by any discrete or analog input point, at the same RTU or at any other RTU. This shall be accomplished during configuration at the central site computer system and shall be available for an unlimited number of control points. The DCM shall have LEDs to indicate: the status of each output point; receive communications; transmit communications; CPU fault; and power status. Connector fingers shall be gold-over-nickel-over-copper plated to inhibit corrosion.

Technical Data

Board size	5.25" x 6.88"
Outputs	
(DCM001)	1 Amps, 60 to 280 VAC
(DCM011)	1.5 Amps, 3 to 60 VDC
Output Protection	M.O.V. and Opto-isolated
Inputs (each)	10-30 volts AC/DC, 30-300 volts AC/DC with inline resistors
Input Protection	M.O.V., Transorb, and Opto-isolated
Input Impedance	6K ohms
Supply Voltage	8 to 14 VDC
Supply Current	165 mA

Warranty

Data Flow Systems, Inc. (DFS) offers a one (1) year on-site warranty covering defects in materials and workmanship. All DFS "plug-in" function modules, Pump Control Units (PCU), Supervisory Control Units (SCU), and Back Pack Radios (BPR) carry an extended two (2) year return-to-factory warranty. This extended warranty does not cover misuse, vandalism, or Acts of God. However, these items are warranted against damage due to lightning for the entire three-year period.

Represented by

Order Model DCM001-1 for AC Output
Order Model DCM011-1 for DC Output

61101

Ph:(321)259-5009 * Fax:(321)259-4006 * <http://www.dataflowsys.com> * sales@dataflowsys.com