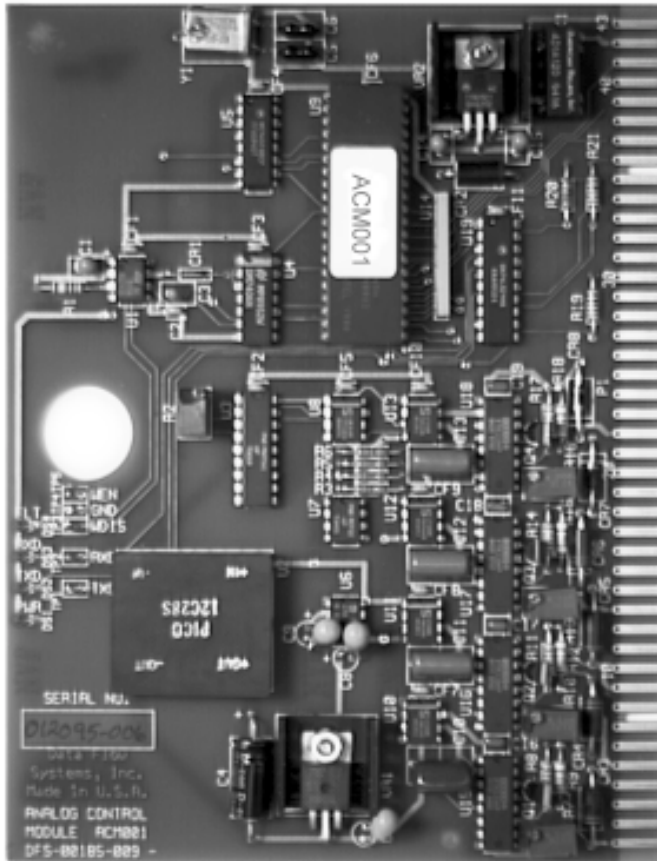


ANALOG CONTROL MODULE



Features

- ✧ 4 analog output points
- ✧ 12 bit D/A
- ✧ On-board voltage regulation
- ✧ Watchdog Timer
- ✧ LEDs on power, transmit data, receive data, and CPU failure
- ✧ On-board communications and functional firmware
- ✧ Surge protected (nondestructive)
- ✧ No adjustments, switches or straps (self-configuring)
- ✧ Keyed to prevent damage
- ✧ Gold edge connector fingers
- ✧ Module removable without disturbing field wiring
- ✧ Power interlocked to prevent removal while powered
- ✧ 1200 baud communication
- ✧ UL Listed

Description

The Analog Control Module (ACM001) is a microprocessor-controlled multiple output module used to control from 1 to 4 analog outputs. Each output provides 4-20 mA with 12 bit accuracy. The rate of change (slew rate) of each point is configured over the radio link.



Data Flow Systems, Inc. * 605 N John Rodes Blvd. * Melbourne, FL 32934 * (321)259-5009

ANALOG CONTROL MODULE (ACM001)

Brief Specifications

The Analog Control Module (ACM) shall control up to 4 analog outputs. The analog control module shall be capable of producing 4-20 ma on each of the outputs, driving a 0 to 1000 ohm load. The analog output shall have 12-bit accuracy. Each analog control output shall have configurable engineering units. All the ACM configurable parameters shall be operator controlled. The Analog Control Module shall have LEDs to indicate: receive communications; transmit communications; CPU fault; and power status. Any analog control point shall have the capability of being automatically controlled by any analog monitor point, at the same RTU or at any other TACII RTU. This shall be accomplished during configuration at the central site computer system and shall be available for an unlimited number of control points. Software or firmware modifications to support the configuration will not be accepted. The analog control module shall supply a 24 VDC power source for the 4-20 ma. loops. Connector fingers shall be gold-over-nickel-over-copper plated to inhibit corrosion.

Technical Data

Board Size	5.25" x 6.88"
Output	4 - 20 mA
Maximum Load	1000 ohms
Supply Voltage	10 to 14 VDC
Supply Current	100 mA

Warranty

Data Flow Systems warrants all plug in modules for (3) three years, including any lightning damage. This warranty does not cover misuse, vandalism, or acts of God

Represented by

Order Model ACM001-1

61101

Ph:(321)259-5009 * Fax:(321)259-4006 * <http://www.dataflowsys.com> * sales@dataflowsys.com