

- NOTES (UNLESS OTHERWISE SPECIFIED):
1. OPTIONS:
    - A. MOUNTING FOOT TYPE:
      - 1) PART NUMBER DFS-00280-007-1; ITEM B INSTALLED COMBO MOUNT FOOT.
      - 2) PART NUMBER DFS-00280-007-2; THIS PART NUMBER IS RESERVED AND IS NO LONGER USED.
    2. MATERIAL: TYPE 316 STAINLESS STEEL, #14 GAGE (.0747 THICK), TYPE 316 STAINLESS STEEL, #13 GAGE (.090 THICK) ON REAR PANEL AND WHERE NECESSARY TO EASE FABRICATION.
    3. FINISH: WHITE ENAMEL PAINT ON ALL EXTERIOR SURFACES. ALL SURFACES SHALL BE CLEANED AND ETCHED PRIOR TO PAINTING.
    4. INSTALL ONE EBERHARD LOCKING DRAW LATCH (P/N 750-SSP) AS SHOWN USING THREE STAINLESS STEEL BLIND RIVETS.
    5. REFERENCE DIMENSION FOR ENCLOSURE OPENING IS 21.12x14.5 +/- .03.
    6. MARK PART NUMBER AND REVISION LETTER "DFS-00280-007-01 REV J" WITH BLACK INK ON THE INSIDE SURFACE OF THE DOOR.



DATA FLOW SYSTEMS, INC.  
MELBOURNE, FL

DFS-00280-007-01

DRAWN:

TITLE: ENCLOSURE -  
4 FUNCTION-MODULE RTU

REV. J

CHKD: X.X.X

4 FUNCTION-MODULE RTU

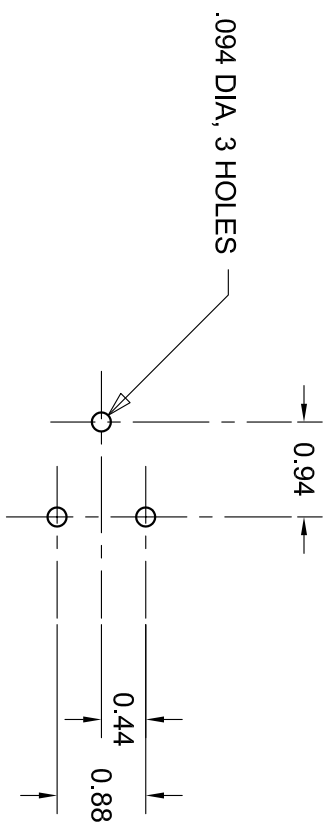
ENGR: X.X.X

RTU204

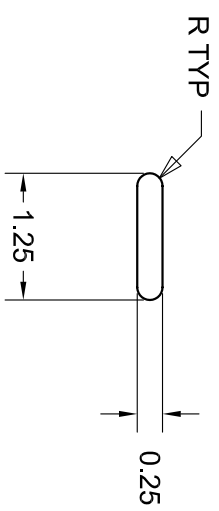
DATE: 03/24/06

SCALE: 1/5

SHEET: 1 OF 2



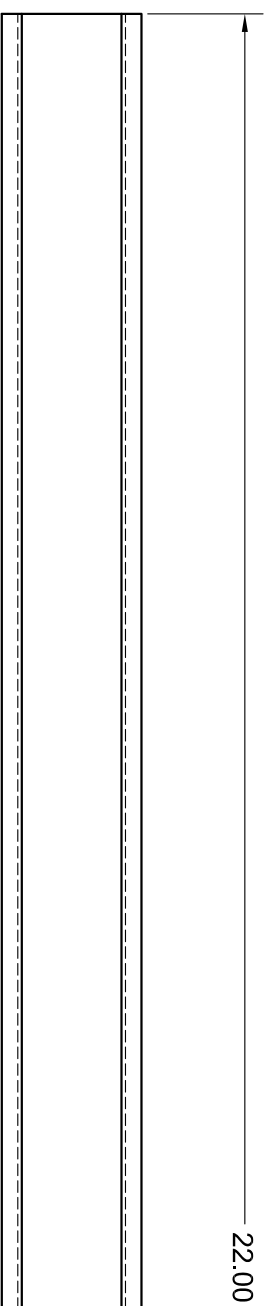
## DETAIL A



## ITEM C

1 REQ'D

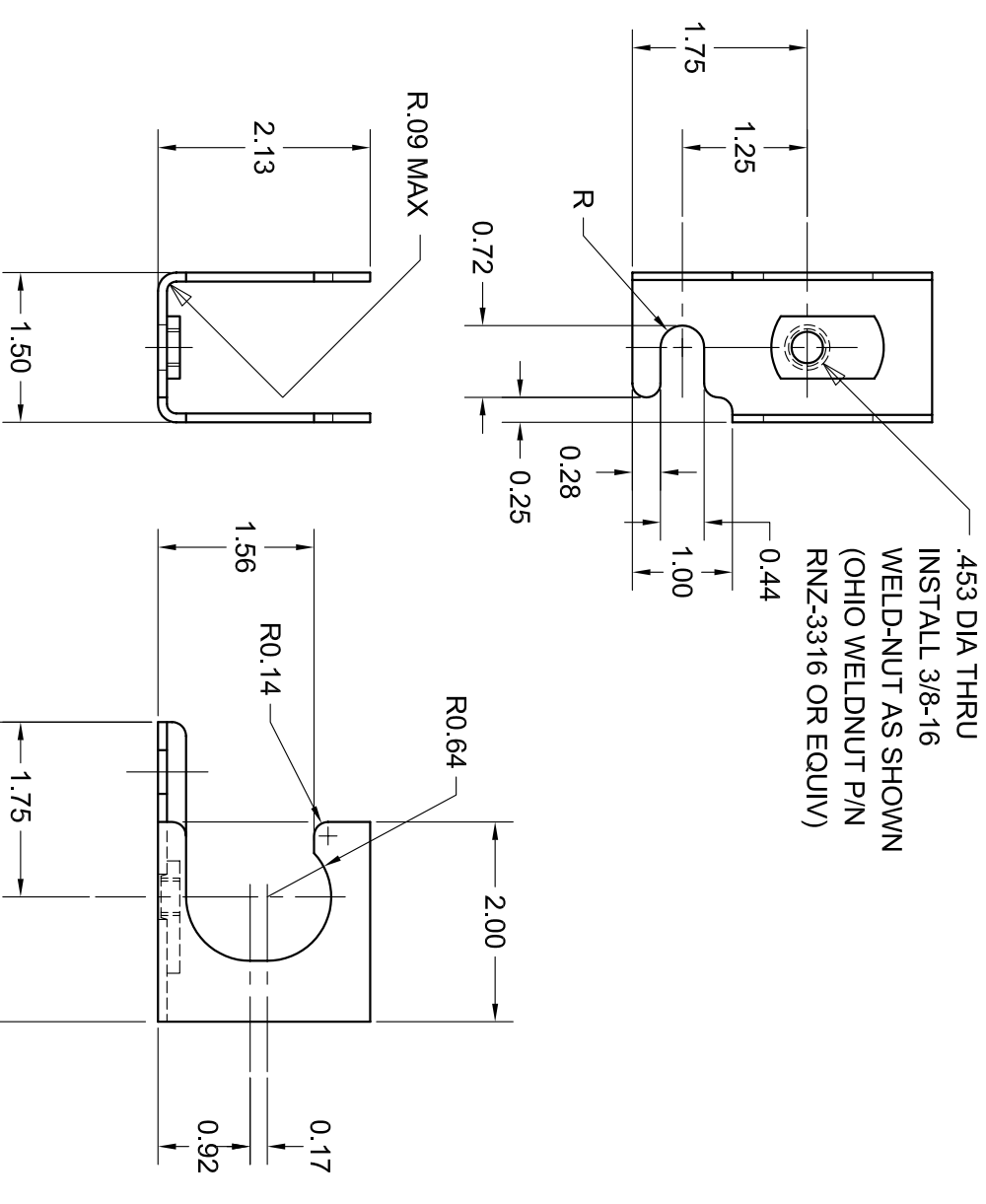
MATERIAL: #14 GAGE (.0747 THICK) 316 ST. ST.



## ITEM E

1 REQ'D

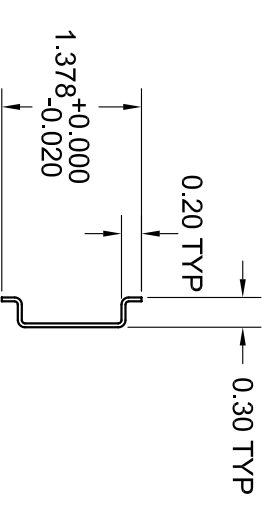
MATERIAL: #20 GAGE (.0359 THICK) 316 ST. ST.  
REMOVE BURRS AND ROUGH EDGES



## ITEM B

4 REQ'D

MATERIAL: #13 GAGE (.0897 THICK) 316 ST. ST.



DATA FLOW SYSTEMS, INC.  
MELBOURNE, FL

DFS-00280-007-1

DRAWN: ①

TITLE: ENCLOSURE -

REV.

CHK'D: X.X.X

4 FUNCTION-MODULE RTU

J

ENGR: X.X.X

RTU204

DATE: 03/24/06

SCALE: 1/2

SHEET: 2 OF 2